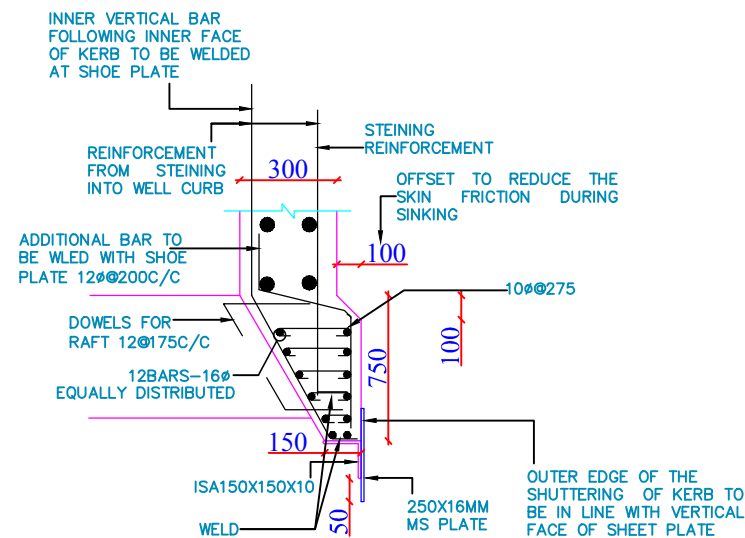
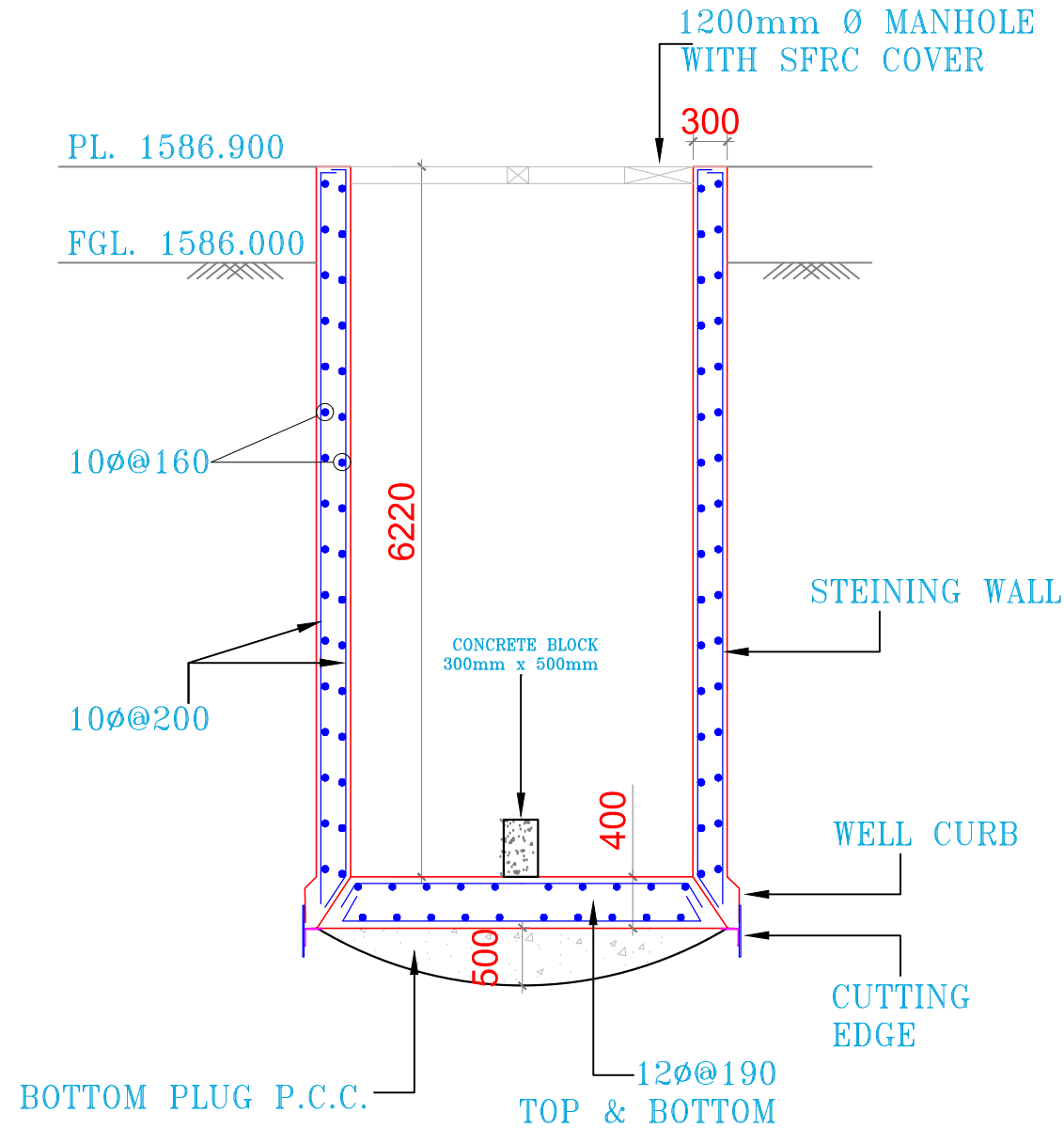


PLAN



WELL CURB &
CUTTING EDGE DETAIL



TYPICAL SECTION

PROCEDURE OF WELL SINKING


1. To prepare the ground for laying the cutting edge.
2. To cast the well-curb after laying the cutting edge.
3. To build the steining over the well-curb.
4. To remove the earth from the well pocket by manual labour or by grabbing and thus to create a sump below the cutting edge level. The well will go down slowly
5. To continue the process of building up the steining and the dredging in alternate stages. Thus the well sinks till the final founding level is reached.
6. If necessary, kentledge load may be placed on the well steining to increase the sinking effort for easy sinking of the wells.

NOTES

1. ALL DIMENSIONS ARE IN "MM" U.N.O.
2. THE SBC HAS BEEN TAKEN FROM SOIL REPORT
3. THE WATER TABLE AT 0.3M
4. GRADE OF CONCRETE SHALL BE AS FOLLOWS:
 - 4.1. STEINING WALL M30
 - 4.2. WELL CURB M30
 - 4.3. BOTTEM SLAB M30
 - 4.4. BOTTOM PLUG M15
5. GRADE OF STEEL SHALL BE AS FOLLOWS:
 - 5.1. REINFORCEMENT BARS FE500
 - 5.2. MS PLATE YST250
 - 5.3. ANGLE YST250
6. CLEAR COVER TO MAIN REINFORCEMENT SHALL BE AS FOLLOWS:
 - 6.1. STEINING WALL 50MM
 - 6.2. WELL CURB 50MM

NOTES:-

- REF: - SLICE GATE VALVE CHAMBER
DWG.NO. - WAPCOS/MGA/01
1. ALL DIMENSIONS ARE IN mm. UNLESS OTHERWISE SPECIFIED.
 2. DO NOT SCALE WORK, TO WRITTEN DIMENSIONS ONLY.
 3. DRAWING SIZE : A3

DEPTT	PMU JTFRP		
PROJECT	STORM WATER DRAINAGE SCHEME BONPURA & PADSHAHI BAGH, ZONE - 1, SRINAGAR, (J&K)		
TITLE	VALVE CHAMBER PLAN, SECTION & DETAILS FOR MPS (3.0M X 6.22)		 WAPCOS LIMITED
DWG. NO. - WAPCOS/C/STR/01	DATE - 30.05.2019	REVISION : - R2	